

	<h1>ADAPTATION ASSEMBLY INSTRUCTIONS</h1>			<h2>AmTryke</h2> <p><i>The therapeutic tricycle for people with disabilities</i></p> <p>For questions or to place an order, please contact: Amtryke, LLC. (800) 838-1845 x114 amtryke@ambucs.org www.ambucs.org</p>
				

Snappy Head Rest

#30-14-0350

Parts Included:

Snappy Head Rest, Connecting Rods with Hardware, Head Rest Bracket, 4 Bolts and Washers

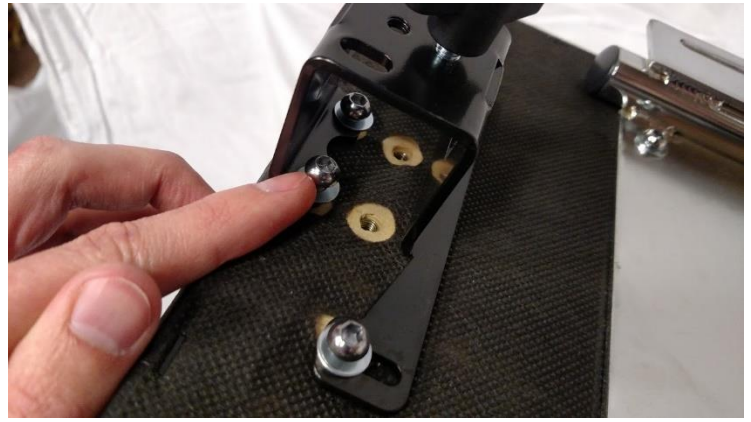


Step 1) Locate Snappy head rest bolt slots for mounting on the back of your snappy seat back system



Revised Date: 4/18/2016

n:\amtryke\manuals and instructions\accessories\snappy head rest\snappy head rest.docx



Step 2) Apply head rest bracket to bolt slots. Use the 4 bolts and washers included with your and tighten with a 4mm Allen Wrench

Step 3) Insert head support rod to the bracket fixed to the back of the snappy seat back system. This rod can be moved in a variety of positions for best rider fit. Next, slide head rest inside rod into the support rod bracket. Fine tune the fit according to the rider and screw the black knobs in place.



Completed
Installation of
Snappy Head Rest



Revised Date: 4/18/2016

n:\amtryke\manuals and instructions\accessories\snappy head rest\snappy head rest.docx